

Tower Cam via Mesh

Written by Jim Kinter, K5KTF - Last Updated Monday, 16 January 2012 22:19

Installed one of my Trendnet TV IP110 webcams in a weatherproof box, then installed that inline with my 24dBi dish on a 50' push up pole.

Tower Cam via Mesh

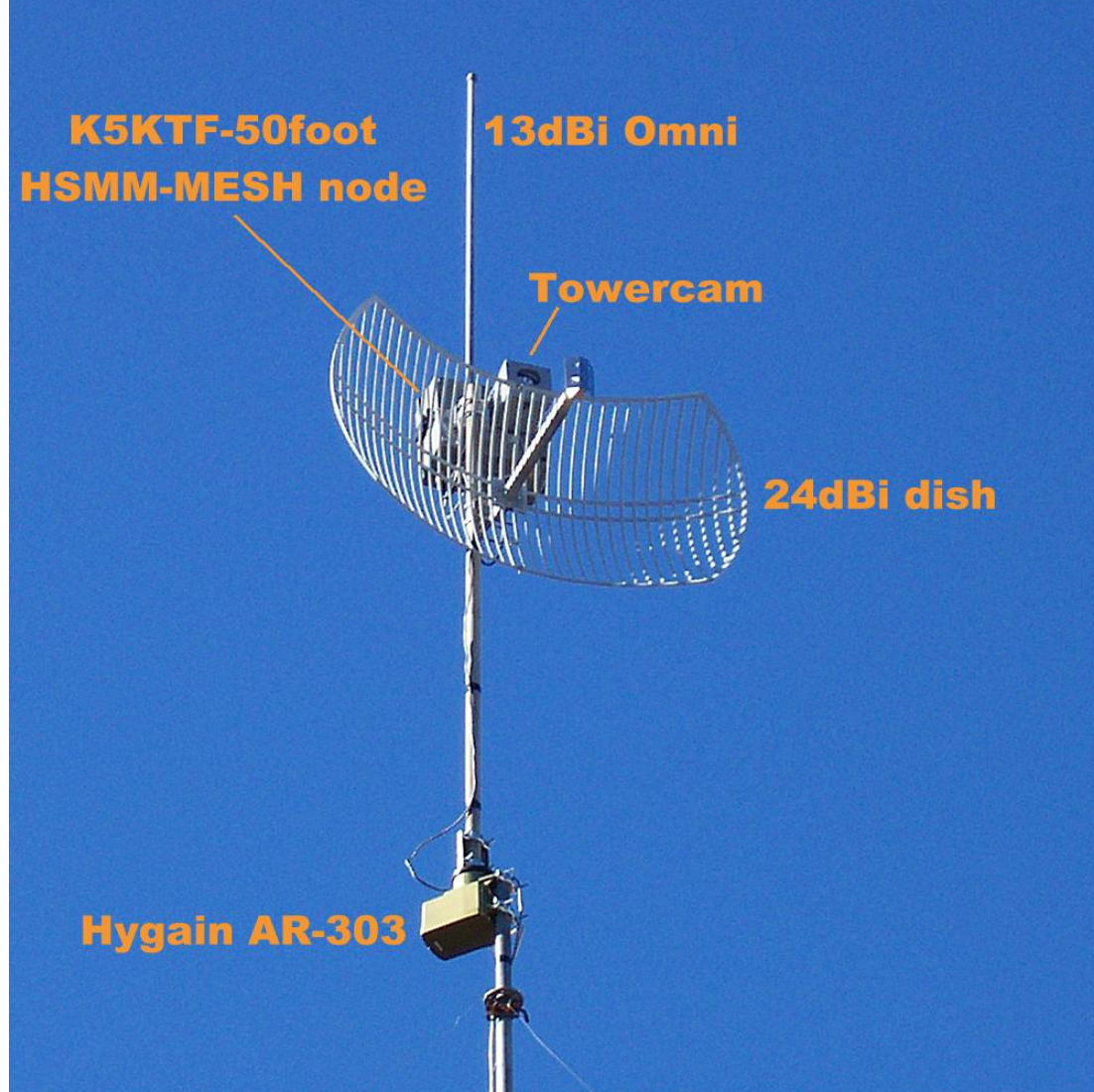
Written by Jim Kinter, K5KTF - Last Updated Monday, 16 January 2012 22:19



Tower Cam via Mesh

Written by Jim Kinter, K5KTF - Last Updated Monday, 16 January 2012 22:19

With the addition of the 24dBi dish antenna, the tower cam is now able to see 300ft in any direction.



And the 24dBi dish antenna is now able to see 300ft in any direction.